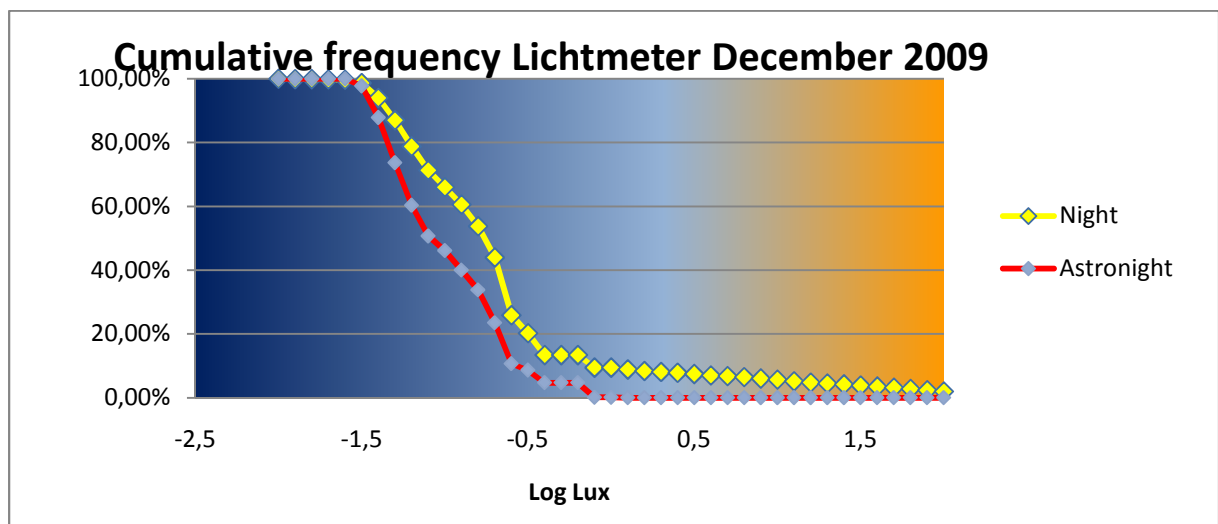
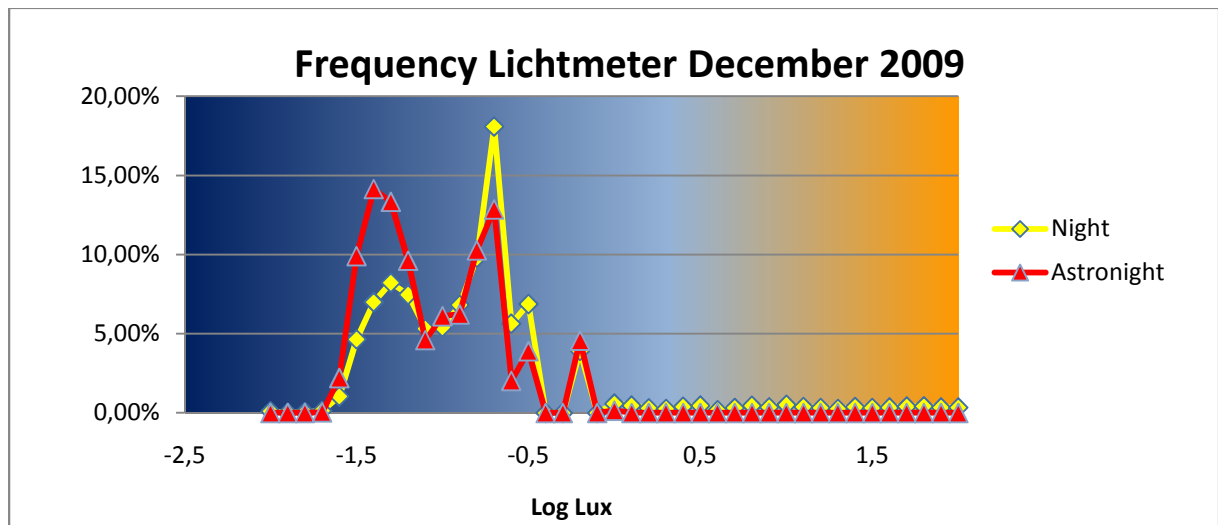


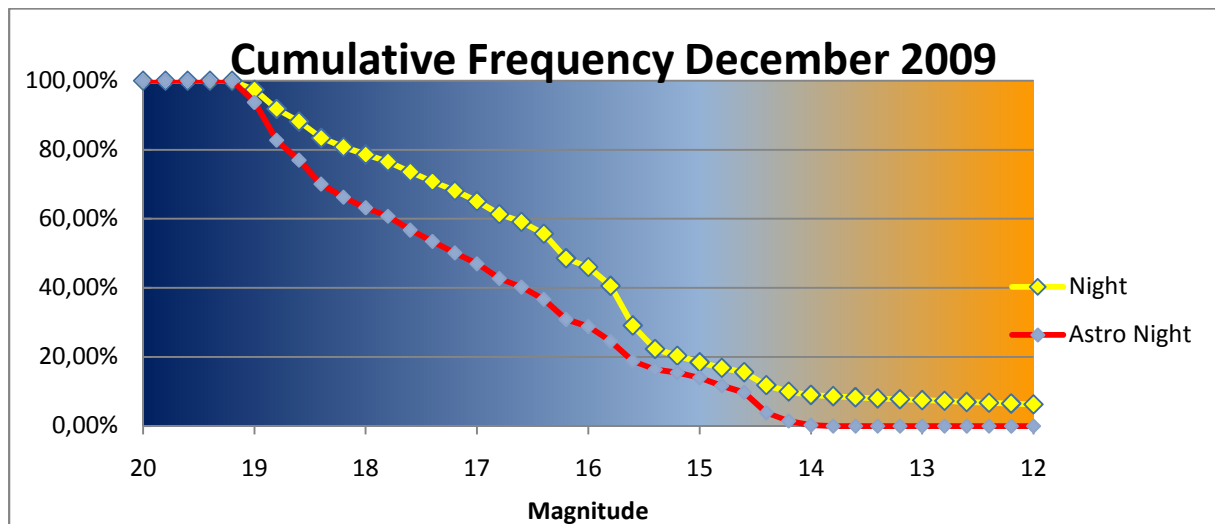
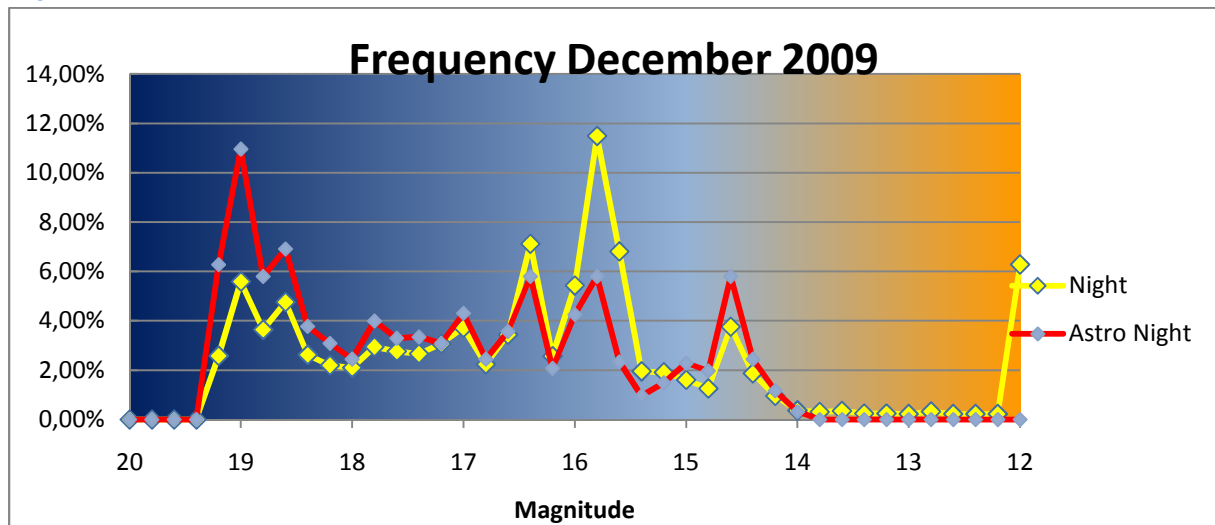
Results December 2009

Lichtmeter mark 3.2



	Night	Astronight
Gemiddelde	-0,77691	-1,10096
Standaardfout	0,009111	0,008213
Mediaan	-0,85482	-1,10607
Modus	-0,54407	-1,4351
Standaarddeviatie	0,741953	0,224012
Steekproefvariantie	0,550494	0,050181
Kurtosis	5,782518	-1,1456
Scheefheid	2,260908	0,038173
Bereik	4,763123	0,97535
Minimum	-2,05621	-1,51942
Maximum	2,706915	-0,54407
Som	-5152,46	-819,111
Aantal	6632	744

SQM_LE



	Night	Astro Night
Gemiddelde	16,13757	17,06498
Standaardfout	0,031592	0,035343
Mediaan	16,26	17,19
Modus	15,64	19
Standaarddeviatie	2,216197	1,532441
Steekproefvariantie	4,91153	2,348377
Kurtosis	2,887578	-1,1627
Scheefheid	-1,44328	-0,31975
Bereik	11,87	5,25
Minimum	7,26	13,88
Maximum	19,13	19,13
Som	79412,97	32082,17
Aantal	4921	1880